

BIMSafe NZ Project

The New Zealand Construction Industry has one of the highest rates of accidents and injury. Construction accounts for 10% of the workforce and **17% of ACC claims** at an annual cost of **\$138 million**.

BIMSafe NZ is a three-year, **\$1.7m collaboration** between the building industry and government and aims to reduce accident and injury rates in New Zealand through greater understanding, communication, and mitigation of risk.

Safety through innovation, technology, and collaboration

BIM is a powerful visualisation, collaboration, and planning tool with potential to be a game-changer for construction worker safety outcomes. Harnessing this technology, BIMSafe NZ are developing 'Best Practice Guidelines' to encourage all industry stakeholders to increase health and safety information within BIM models, improve design mitigation of risk, and enable greater worker access.

The success of the Project relies on industry input and uptake. This will ensure that Health and Safety Integrated BIM changes behaviours in the way that risks are identified, communicated, and managed throughout a building's lifecycle – from design to decommission. Designers, architects, contractors, and sub-contractors, engaging via this common platform have an exciting opportunity to bring about meaningful industry change.

Safety through engagement

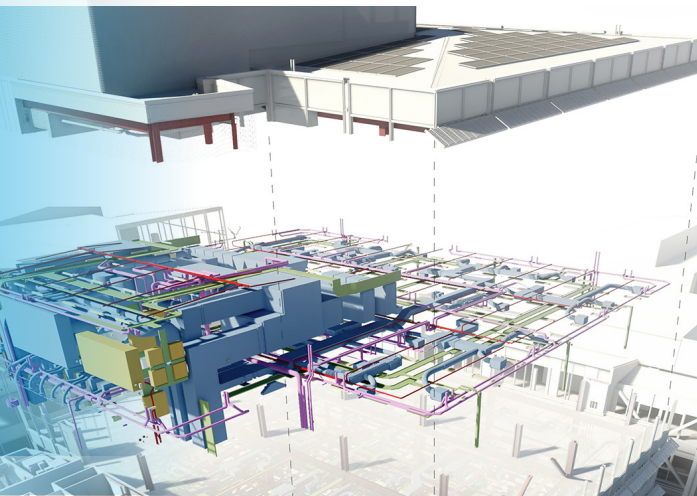
BIMSafe NZ is committed to educating the sector on the benefits of using Health and Safety Integrated BIM. The digital twin case study will utilise the power of visualisation as a learning tool, enabling workers to engage with the model and make improved real-time decisions on health and safety.

Long term outcomes and benefits

As the use of Health and Safety Integrated BIM gains momentum with sub-contractors and workers, the industry can expect a positive cycle of uptake, impact, and change. The knowledge garnered from this Project through the guidelines, case study and technology will have far-reaching benefits. Sharing this knowledge through education and engagement of the wider industry provides the opportunity to transform the construction sector and literally save lives.

Thanks to our Project Partners and Supporters

Our valued partners and funders have helped make this Project possible. Their \$1.7m investment over three years includes \$200,000 in-kind from Advisory and Governance groups and demonstrates their commitment to creating a safer industry for all.



Images courtesy of Warren and Mahoney

Project Partners:



Project Funding Partners:



Kindly supported by:

