

# HEALTH AND SAFETY BY DESIGN



**Canterbury  
Safety Charter**  
WORKING SAFELY TOGETHER

The Canterbury Safety Charter is a charitable organisation focusing on Cantabrians working safely together to grow knowledge and awareness using best practice to be healthy and safe.

The following slides were created by the Professional Services Working Group and whilst not a new concept to the industry, the Safety Charter felt there was room for a concise summary into the what, why, who, when and how of Health and Safety by Design.

The fact sheets capture key points, to help demystify the concept and encourage greater involvement and collaboration through the whole life of a building or structure.

The Professional Services Working Group prepared the fact sheets as a quick guide and as a potential educational resource.

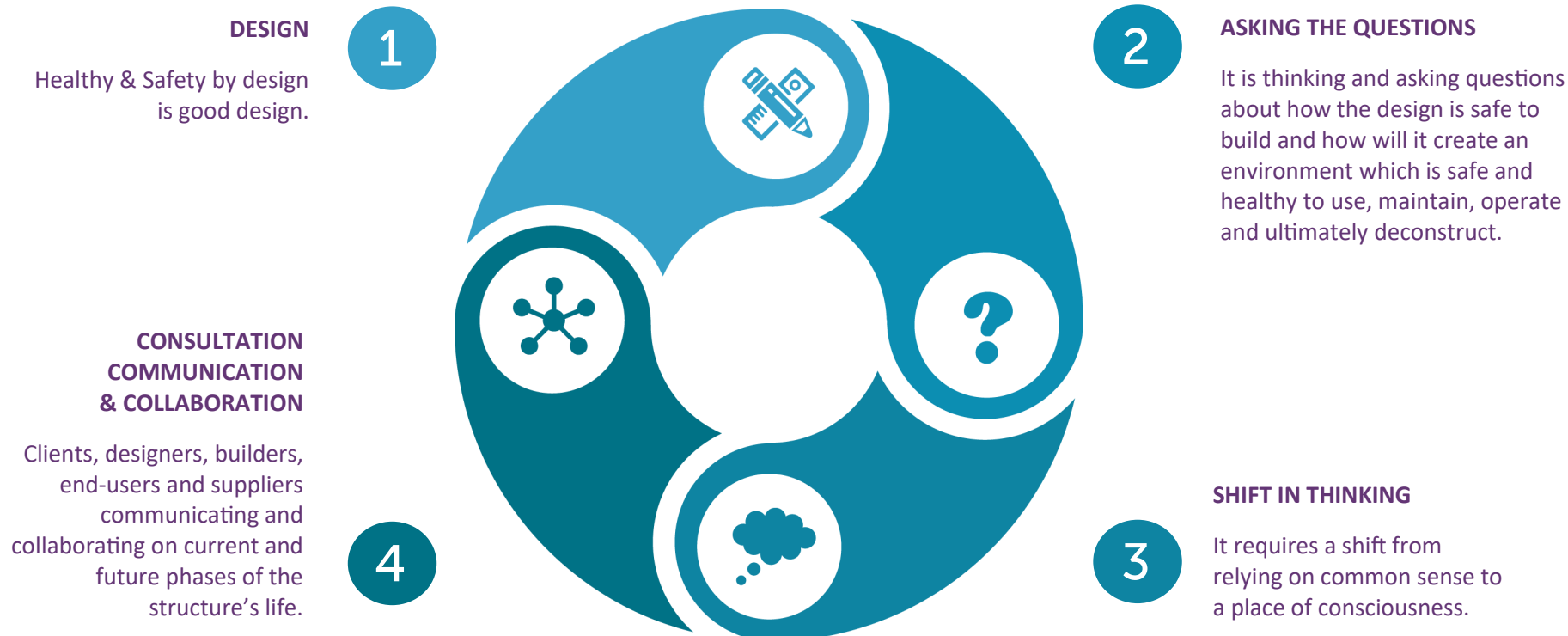
The fact sheets are arranged so that they can be used as posters or slides.

We trust that the fact sheets will contribute to continuous improvement of our joint competency in health and safety in our society.

For additional information, WorkSafe NZ has produced [Health & Safety by Design good practice guidelines](#).

# WHAT?

## WHAT IS HEALTH & SAFETY BY DESIGN?



# WHY?

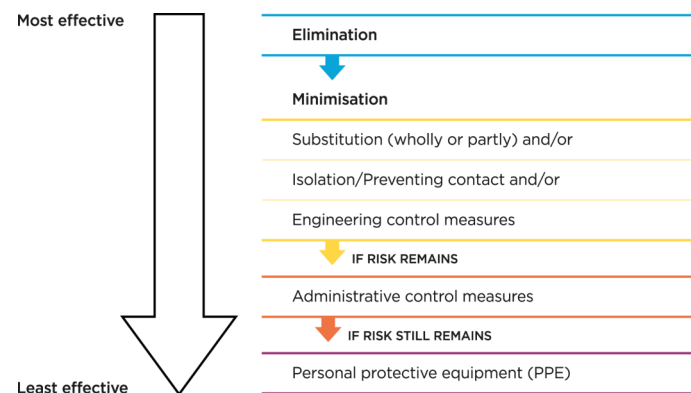
To design a structure that is a healthy and safe place to live, work, eat or play in.



A place that is safe to build, access, maintain, operate and ultimately deconstruct.

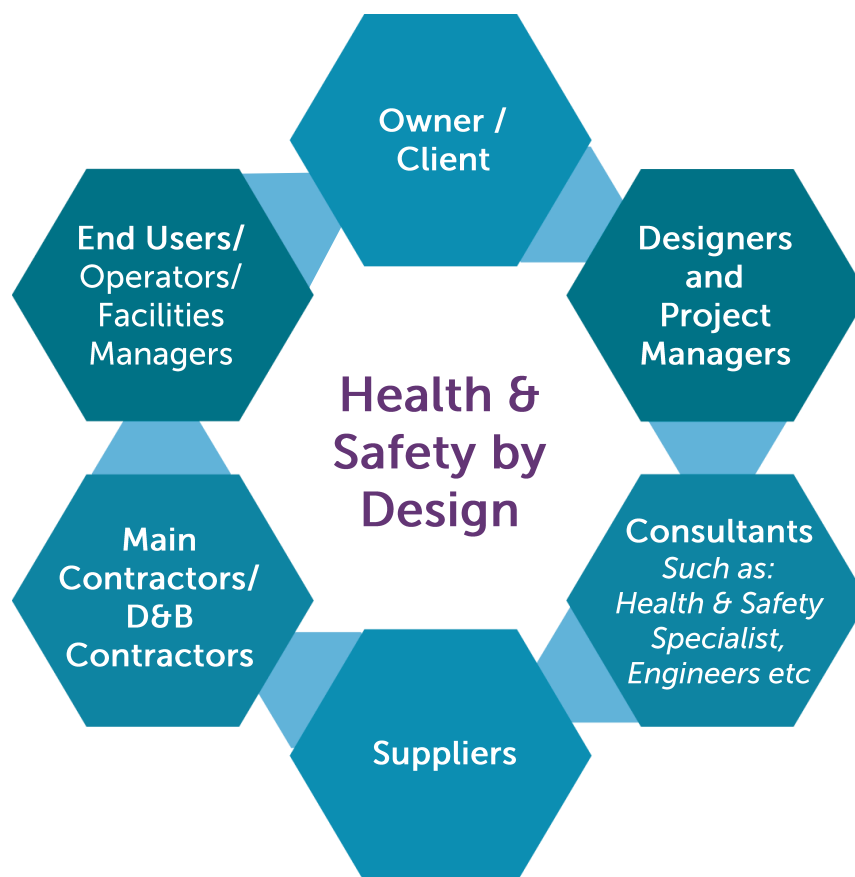


We must identify key hazards and risks, and apply a risk management technique to determine the most effective control measure so far as is reasonably practicable.



# Who?

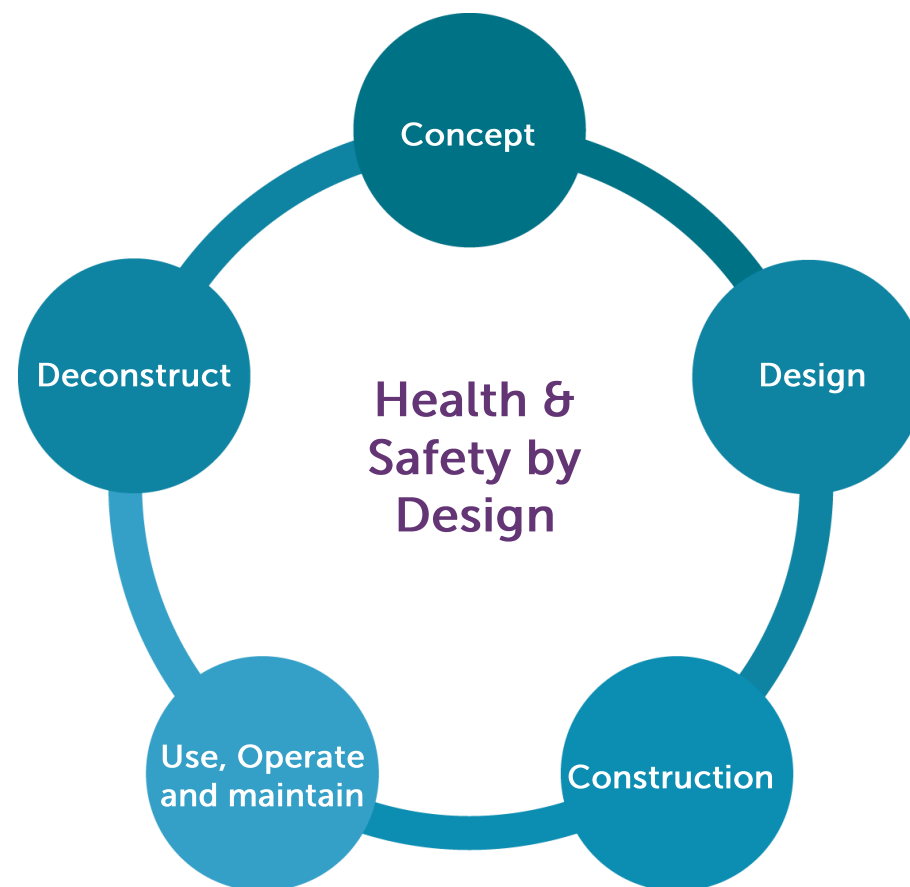
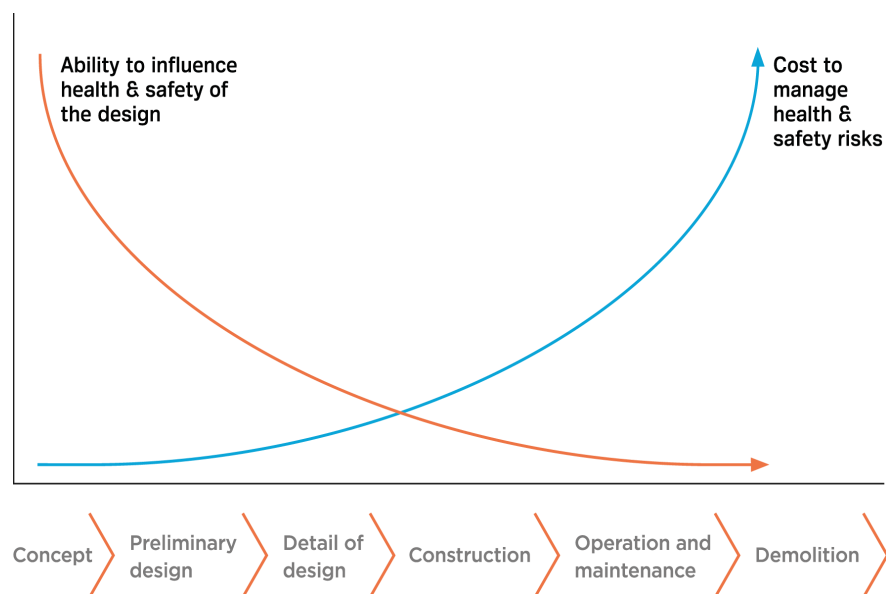
## WHO NEEDS TO PARTICIPATE IN THE HEALTH & SAFETY BY DESIGN PROCESS?



# WHEN?

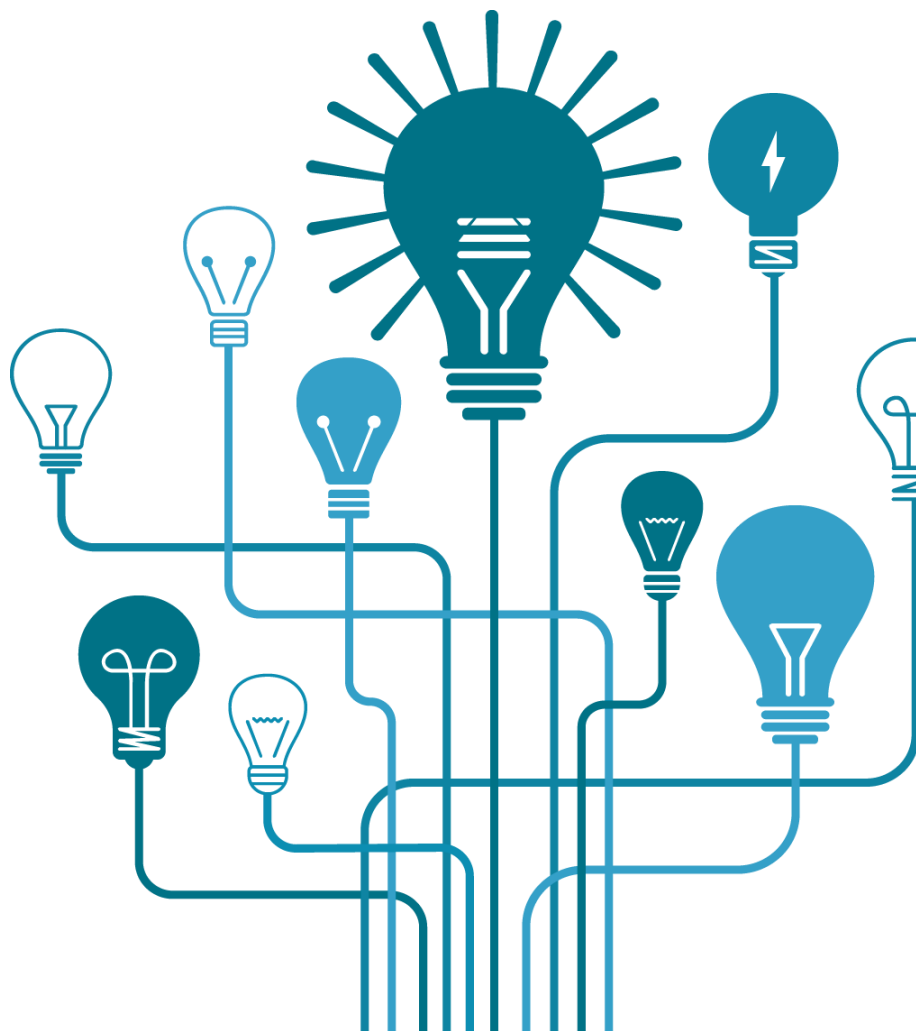
The process starts at the first stage of concept design and must be considered throughout the lifecycle of the structure.

Start early—Influence more.



# How?

## HOW DO I DO HEALTH & SAFETY BY DESIGN?



Health & Safety must be consciously considered as you design.

*Think* about all parts *such as* materials that are safe to handle, *such as* barriers to prevent falling, *such as* accessibility of services for maintenance, *such as* separation of vehicle and people and so on....

A team of stakeholders and designers **collaborate**, **consider**, **record** and **share** findings from workshops and meetings that **document** decisions made on the construction, operation and maintenance of the structure.

The decisions recorded in collaborative workshops must be **shared** with the owner who takes over the **responsibility** of managing any residual and on-going risks for the lifecycle of the structure.