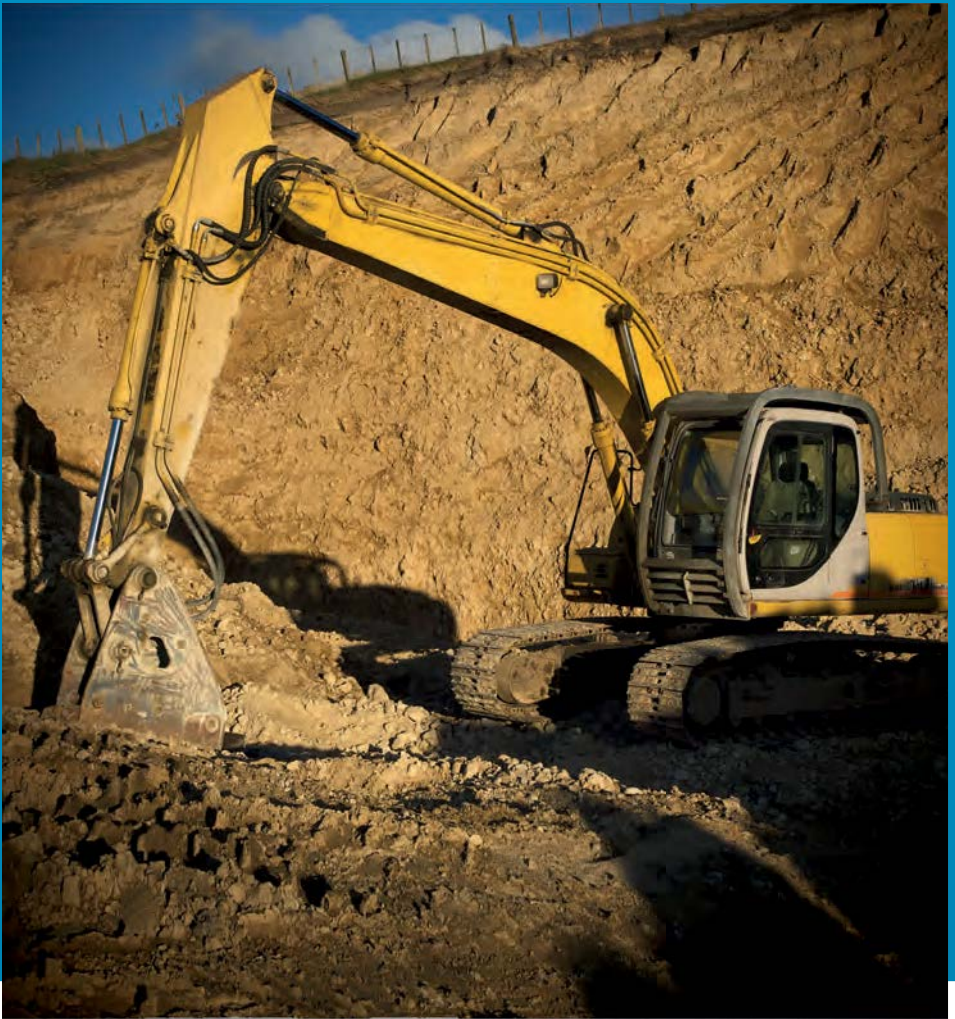


*Tips*  
**Excavations**

*Know how to minimise, isolate and eliminate hazards*



## Toolbox talk

# Excavations

- Only use equipment you have been trained on and are competent to use.
- Take five minutes at the start of the day to check and record the machine is safe and operational. Check open trenches are stable.
- Ensure you check and locate underground services and mark their location on the ground with fluorescent paint if necessary.
- Avoid being in the trench unless absolutely necessary.
- Work safely around overhead lines; always treat them as live.
- Isolate the work area using barriers, cones and tape.
- Use a 'spotter' and agree on what signals will be used. The operator must stop if the spotter goes out of eyesight.
- Know the machinery limitations; operate it only in accordance with manufacturer's or hirer's instructions.
- Batter or support the sides of trenches and excavations.
- When moving machinery between worksites, lower booms, plan the route and use a 'spotter'.
- When stationary, apply brakes and/or wheel chocks.

**Note:** *It is a notifiable activity when excavation is deeper than 1.5 metres or where the excavated face is over 5 metres and slope steeper than 1 metre out for every 2 up.*