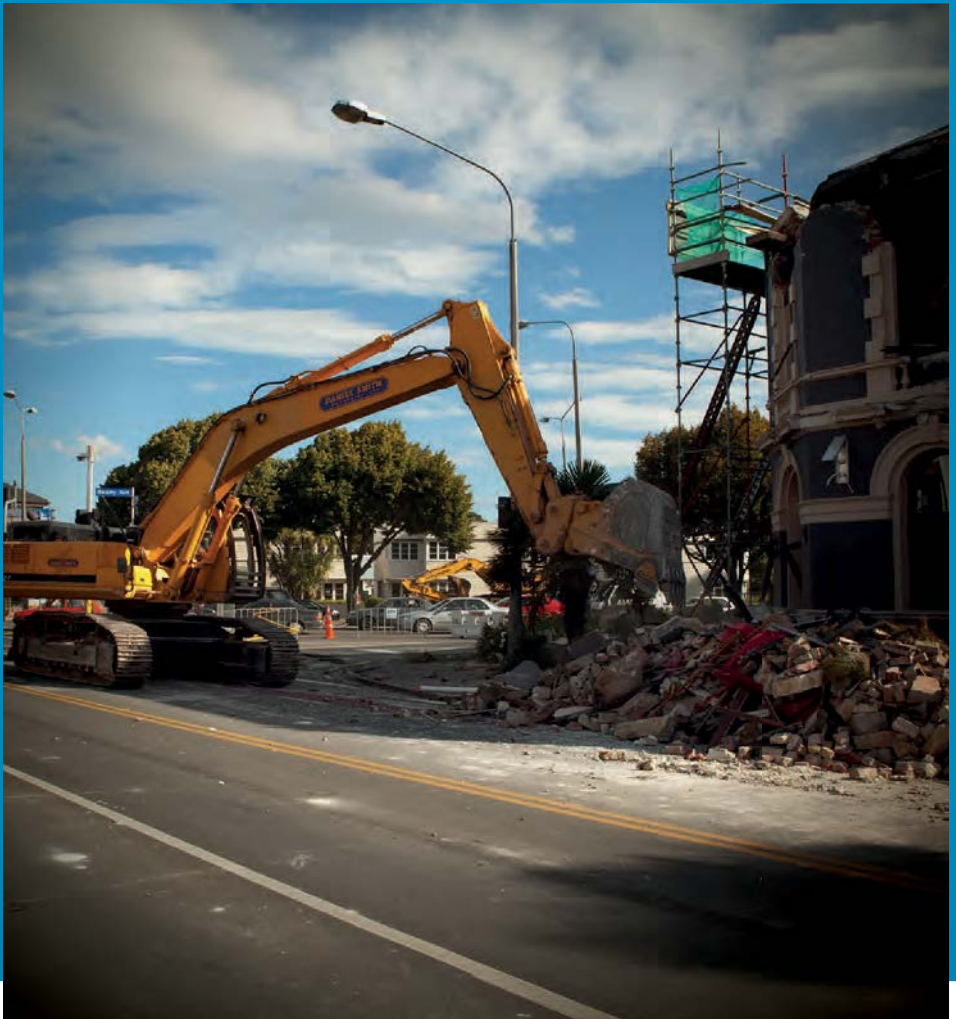


Tips Demolition

Make sure you know the additional hazards that relate to demolition



Demolition

Demolition shares all of the hazards associated with construction, plus some hazards specific to the demolition process. There are a number of issues that need to be managed, such as:

- site security
- live services
- pre-demolition checks
- site and structural inspections
- hazardous materials (including asbestos)
- associated items such as tunnels, sumps, storage tanks, cellars
- stability of the structure being demolished.

A number of these issues can be managed using an appropriate Site Specific Safety Plan, while others will require specific processes to be controlled effectively.

More detailed information can be found in the Best Practice Guidelines for Demolition in New Zealand, which can be obtained from the Demolition and Asbestos Association.

Note: *Demolition is a notifiable activity.*