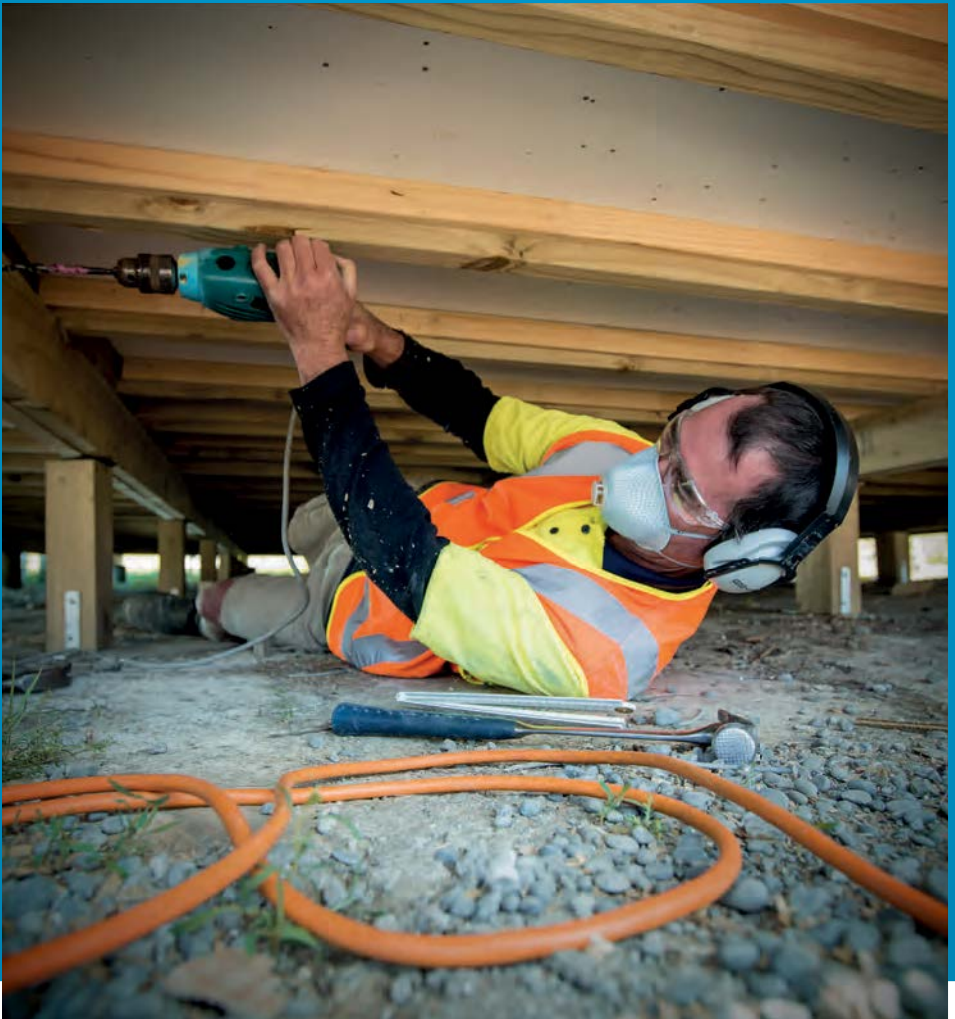


Tips
Confined Spaces

Know how to identify confined spaces



Confined Spaces

Confined spaces are spaces that:

- are not intended for human occupancy
- have the potential to contain a dangerous atmosphere, a liquid or a substance that may engulf anyone in that space
- are large enough for a worker to enter, but have limited entries and exits.

To enter or work in a confined space you need:

- a permit to work
- appropriate training
- a means of testing the atmosphere inside that space
- a safe atmosphere, or if that is not achievable, appropriate respiratory equipment
- someone to 'stand by' while you are in that space
- a means of communicating with the stand-by person
- a method of rescue or retrieval if things go wrong.

Before you do anything, make sure there is a written rescue plan in place.